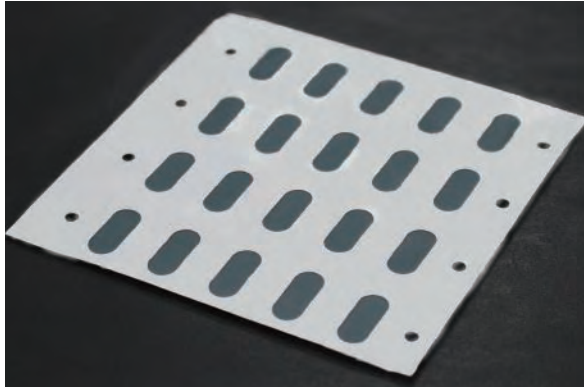


# Komaway® SW

## Sound-permeable, Water-proof sheet



- A breathable, waterproof material suitable for the parts of products such as microphones and speakers for which sound permeation and water-proofing are required
- Prevents water and dust from entering.
- PET mesh is used as a reinforcing material, ensuring high durability.

### Applications



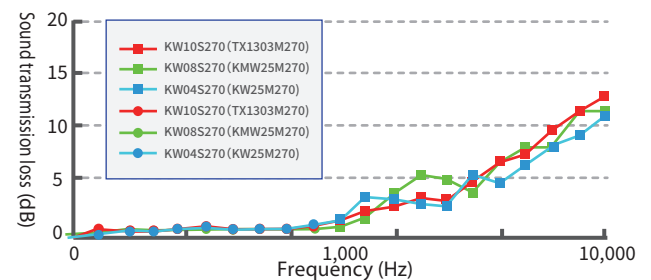
Smartphones / Tablets / Mobile PCs / DSLR cameras  
Outdoor speakers / Wireless earphones  
Electronic components for outdoor use, etc.

### Specifications

Product number	KW04S270 Old : KW25M270	KW08S270 Old : KMW25M270	KW10S270 Old : TX1303M270
Breathability JIS L1096 B, Gurley method	4sec/100cc	8sec/100cc	10sec/100cc
Waterproofness	IPX7 or equivalent	IPX7 or equivalent	IPX7,8 or equivalent
Other	RoHS, REACH compliant		

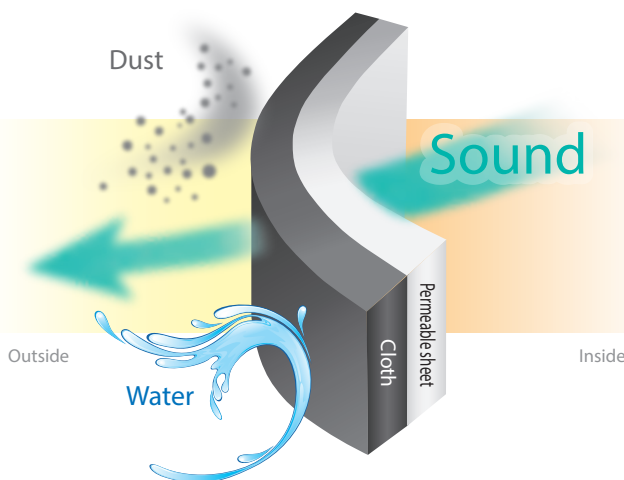
\*The above are measured values, not guaranteed values.

### Acoustic property (sound transmission loss)

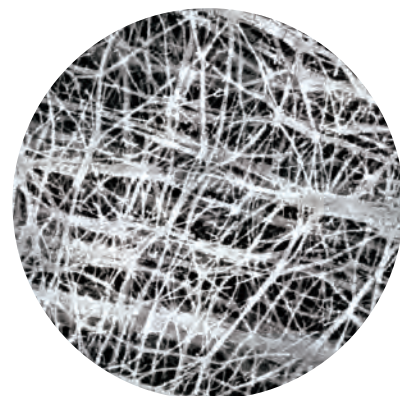


\*Measurement method - Measurement of the perpendicular incidence /transmission loss using sound tubes of 15mm and 100mm inner diameter (ASTM E2611 compliant)

### Configuration diagram



### Enlarged view (electron microscopic image)



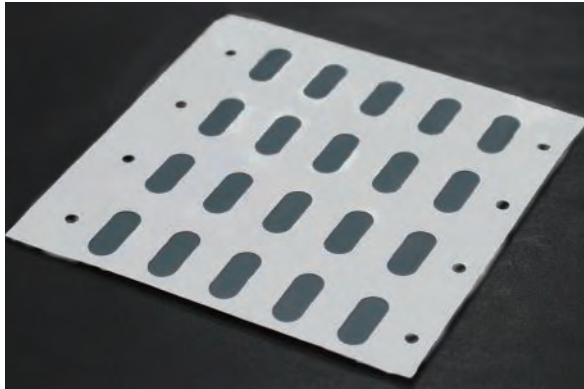
KOMATSU MATERE Co., Ltd.

Tokyo Sales Branch Maruito Ginza No.3 Building 4th floor, 3-10-6 Ginza, Chuo-ward, Tokyo, Japan

TEL: +81-3-3549-3880 E-mail. komaway@komatsumatere.co.jp

# Komaway® SW

透音・防水膜片



## ■ 用途实例



- 本产品因为具有透气和防水性能，适用于需要透音性能并兼具防水性能的话筒和扬声器部位。
- 防止水和灰尘从外部进入。
- 由于使用 PET 网材作为加固材料，具有很强的耐用性。

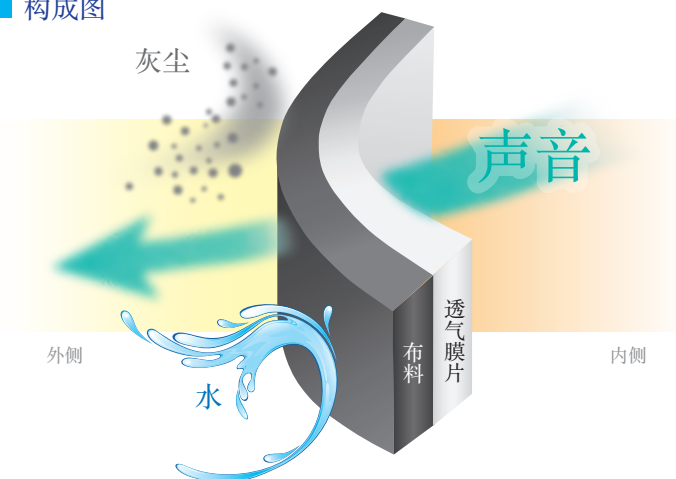
- 智能手机 • 平板电脑 • 移动电脑
- 数码相机 • 户外扬声器 • 无线耳机
- 其他户外使用的电子设备

## ■ 规格

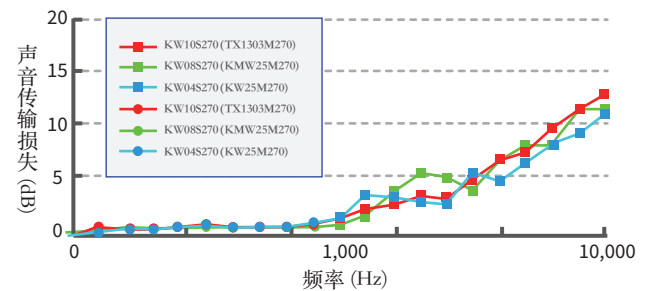
品名	KW04S270 旧品番: KW25M270	KW08S270 旧品番: KMW25M270	KW10S270 旧品番: TX1303M270
透气性 JIS L1096 B, 格利型	4 秒 /100cc	8 秒 /100cc	10 秒 /100cc
防水性	相当于 IPX7	相当于 IPX7	相当于 IPX7, IPX8
其他	符合 RoHS、REACH 标准		

※此处标记的数值是测量值，不是保证值。

## ■ 构成图



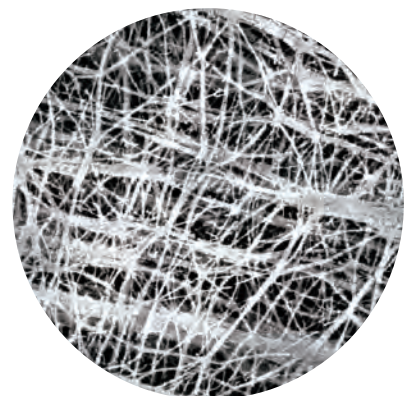
## ■ 声学特性 (声音传输损失)



※测定方法

使用内径为 15mm 以及内径 100mm 的声测管测量垂直入射传输损耗 (根据 ASTM E2611)。

## ■ 放大图 (电子显微镜图像)



KOMATSU MATERE Co., Lt

东京营业所 - 东京都中央区银座3丁目10番6号MARUITO 银座3号大厦 4楼

TEL: +81-3-3549-3880 E-mail: komaway@komatsumatere.co.jp