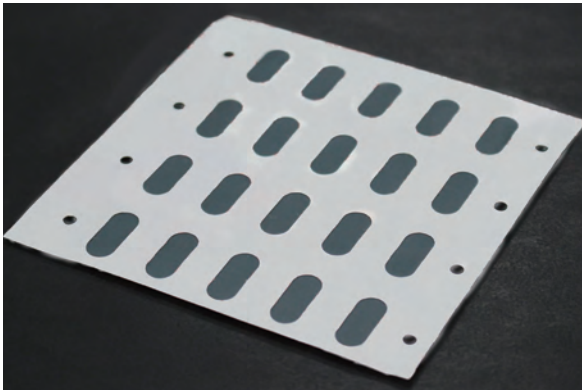


Komaway® VF

Vent Sheet



- Breathable and internal pressure adjustable
- The porous membrane prevents water, dust and oil from entering
- Waterproofness and moisture permeability prevent dew condensation in the housing
- The membrane features water and oil repellency
- PET mesh is used as a reinforcing material, ensuring high durability.

Applications



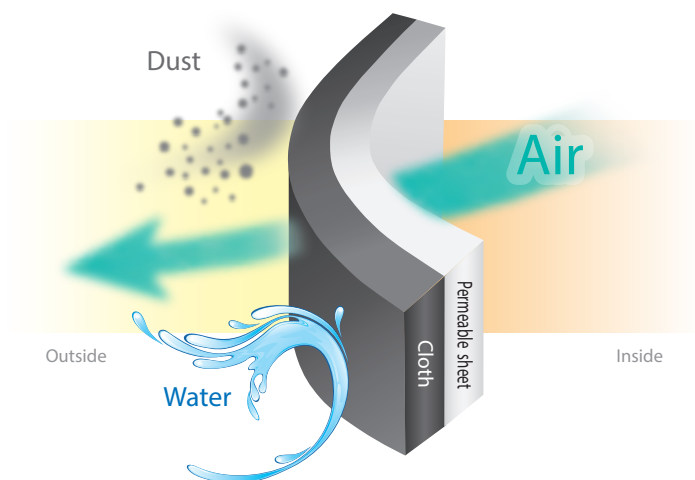
LED lightning / Outdoor security cameras
 Electric bicycle controllers / Outdoor switchboards
 Internal pressure regulating membrane
 Dew condensation prevention sheet for outdoor use
 Pressure regulator film
 Pressure regulator film for multistory building elevators

Specifications

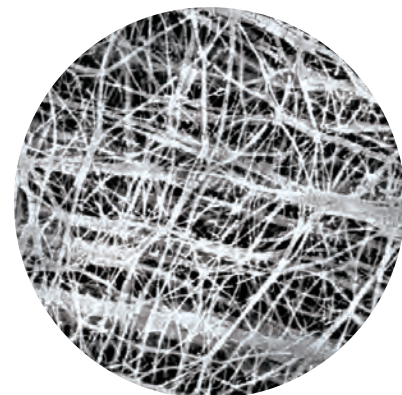
Product number	KW04S270 Old : KW25M270	KW08S270 Old : KMW25M270	KW10S270 Old : TX1303M270
Breathability JIS L1096 B, Gurley method	4sec/100cc	8sec/100cc	10sec/100cc
Waterproofness	IPX7 or equivalent	IPX7 or equivalent	IPX7,8 or equivalent
Other	RoHS、REACH compliant		

*The above are measured values, not guaranteed values.

Configuration diagram



Enlarged view (electron microscopic image)



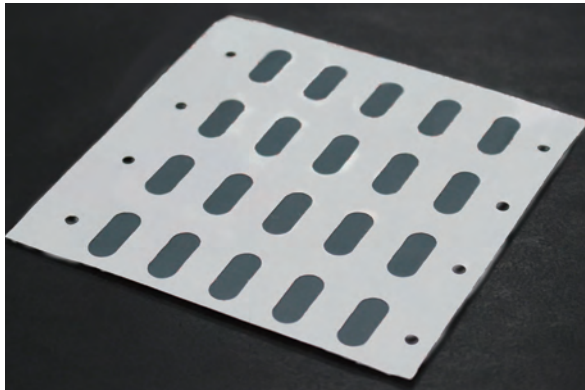
KOMATSU MATERE Co., Ltd.

Tokyo Sales Branch Maruito Ginza No.3 Building 4th floor, 3-10-6 Ginza, Chuo-ward, Tokyo, Japan

TEL: +81-3-3549-3880 E-mail. komaway@komatsumaterere.co.jp

Komaway® VF

透膜片



- 具有透气性，可调整内部压力。
- 多孔膜可防止水、灰尘和油从外面进入。
- 因具有防水和透湿性能，防止外壳内的结露。
- 具有不沾水 · 不沾油性能（膜表面）。
- 由于使用 PET 网材作为加固材料，具有很强的耐用性。

应用实例



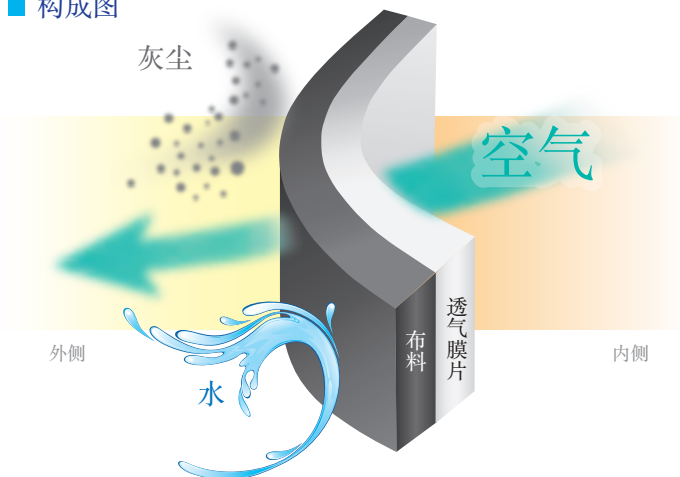
- LED 照明 · 户外安全摄像机
- 电动自行车等的控制器部件
- 户外配电盘 · 作为内部压力调节膜。
- 户外使用，作为防结露过滤器
- 车辆的压力调节膜 · 高层电梯的压力调节膜

规格

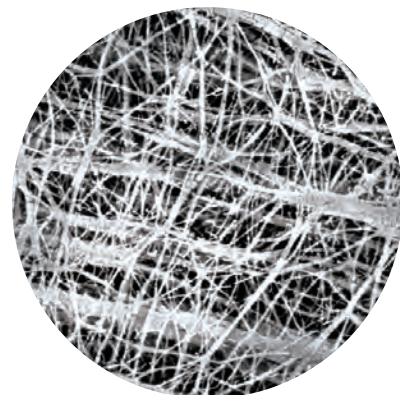
品名	KW04S270 旧品番: KW25M270	KW08S270 旧品番: KMW25M270	KW10S270 旧品番: TX1303M270
透气性 <small>JIS L1096 B, 格利型</small>	4 秒 /100cc	8 秒 /100cc	10 秒 /100cc
防水性	相当于 IPX7	相当于 IPX7	相当于 IPX7, IPX8
其他	符合 RoHS、REACH 标准		

※※此处标记的数值是测量值，不是保证值。

构成图



放大图（电子显微镜图像）



KOMATSU MATERE Co., Lt

东京营业所 - 东京都中央区银座3丁目10番6号MARUITO 银座3号大厦 4楼
TEL: +81-3-3549-3880 E-mail: komaway@komatsumatere.co.jp